

How to participate in our Job Match Program:

1. Register for ONE Green Jobs ORIENTATION meeting:

Tuesday, March 12 at 11 a.m.
netWORKri
1330 Main Street
West Warwick, RI 02893

OR

Tuesday, March 12 at 6 p.m.
Education Exchange
33 North Road
Peace Dale, RI 02879

OR

Wednesday, March 20 at 6 p.m.
Westerly Library
44 Broad Street
Westerly, RI 02891

2. Select ONE Workday:

Thursday, March 21, 9 a.m. to 3 p.m.

OR

Friday, March 22, 9 a.m. to 3 p.m.
Kinney Azalea Gardens
2391 Kingstown Road
Kingston, RI 02881

OR

Saturday, March 23, 9 a.m. to 3 p.m.
Wilcox Park
44 Broad Street
Westerly, RI 02891

3. Attend the Job Matchmaking Event

**Wednesday, March 27
6 to 8 p.m.**
URI Kingston Campus



Please REGISTER at workforce@rinla.org or 401-874-5220

Hablamos Español



Once placed, ask your new employer about RINLA'S Apprenticeship Program

The RI Nursery and Landscape Association, in conjunction with Real Jobs Rhode Island and Apprenticeship RI, is developing and piloting a nationally recognized Registered Apprenticeship program for different occupations within agriculture and plant-based industry.

What is a Registered Apprenticeship?

Apprenticeship is *paid employment*, combining on-the-job learning with job-related classroom instruction to create paid, long-term employment. An Apprentice learns new industry skills while earning a paycheck. Apprentices pass through established milestones learned both on the job and in the classroom, which lead to mastery of the job.

What are the benefits of being an apprentice?

- Paid on-the-job training working with highly skilled industry professionals and mentors
- Free job related education, providing foundational knowledge and reinforcing skills learned on the job
- Wage increases reflect skills learned – with opportunity to predictably progress in your career
- Investment by your employer in your training and skill development
- Structured and measurable on-the-job learning competencies leading to demonstrated milestones
- Valuable hands-on training in specialty trades (e.g. masonry, green infrastructure, fine gardening)
- National certificate of Apprenticeship completion issued by the State of Rhode Island
- Credentials are transferable wherever you go
- Turns your job into a career!
- For more information, email workforce@rinla.org



**Grow Your Future
with a
Green Collar Job!**

Let us match you with a job in RI's Green Industry



The RI Nursery and Landscape Association is offering a job-matching opportunity leading to rewarding employment in RI's agriculture and plant-based industries

Successfully complete the 3 steps of RINLA's Job Match process and you could be placed in a Green Collar job!

What does the Green Industry do in RI?

- Creates healthy landscapes that enrich our quality of life
- Designs and builds landscapes, gardens and green infrastructure
- Grows and propagates plants needed to support agriculture in our state
- Cultivates plants directly used for food, medicine, and aesthetic value
- Maintains the landscapes that support our families, ecosystems and waterways
- Helps stabilize our environment against the effects of climate change
- Supports all aspects of RI's agricultural and horticultural industries



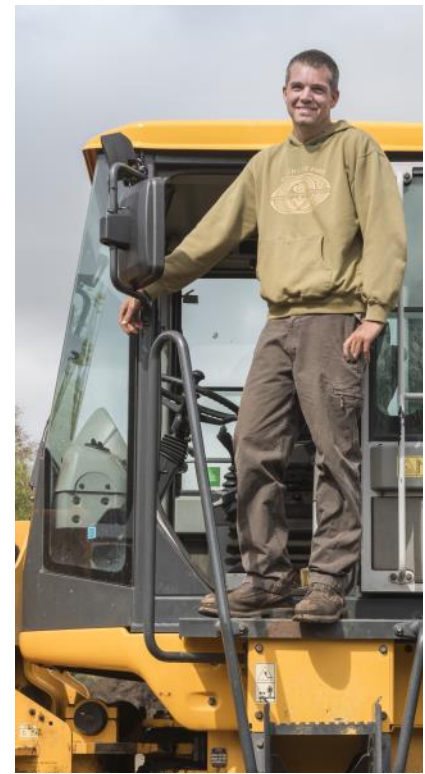
You belong in the Green Industry if you:

- Have a strong work ethic and demonstrate an initiative to learn
- Like to be active and work outdoors
- Enjoy using your hands and physical strengths
- Want to learn more about plants, trees, soil, water, green infrastructure, and ecosystems
- Enjoy landscape and garden design
- Care about protecting the environmental health of our state



What Green Collar Jobs exist in RI?

- Landscape contractors and builders
- Landscape and garden maintenance
- Gardeners and property care technicians
- Greenhouse and nursery growers
- Tree care specialists and arborists
- Stone masons
- Farmers and florists
- Irrigation specialists
- Landscape project managers
- Landscape and garden designers
- And more!



Where are Green Industry businesses located?

Green Industry businesses and their work sites and clients are located all over Rhode Island, in the state's urban and rural areas. That diversity, combined with the small size of our state, means that opportunities abound not too far from your home.

RINLA's commitment to you:

If you are able to successfully complete all of the tasks outlined on the next page, you could be placed with a professional and reputable Green Industry company.

- We will introduce you to a variety of jobs, allowing you to explore your skills in the field
- We will connect you to highly skilled industry professionals who are hiring
- Spanish translation available upon request
- We will get you started on your career pathway into RI's Green Industry
- We will introduce you to our exciting new Registered Apprenticeship Program