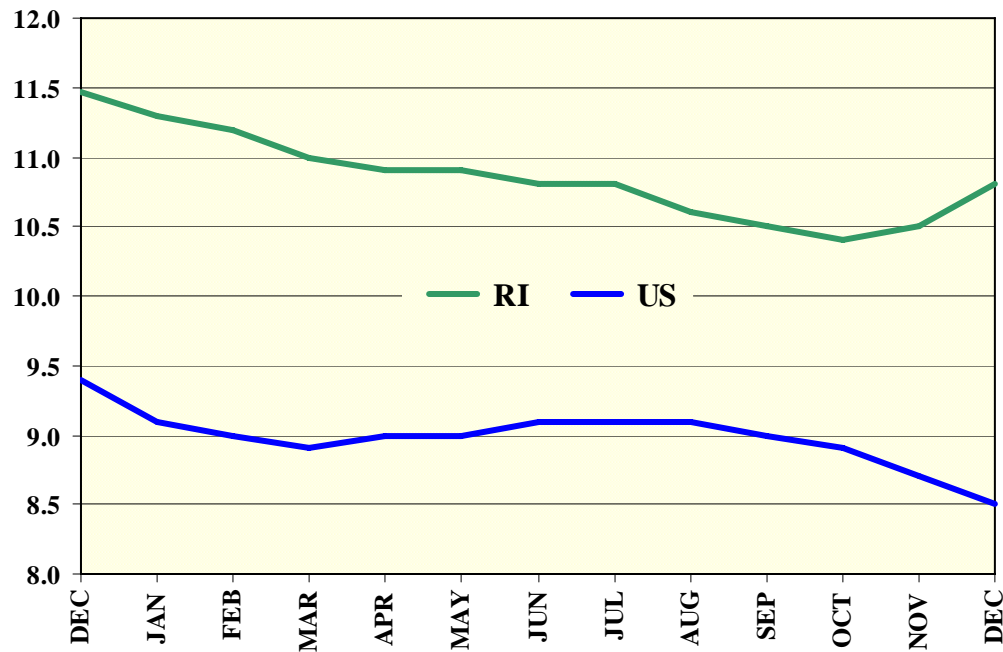


Rhode Island Department of Labor and Training

Local Area LABOR MARKET INFORMATION Unemployment Statistics

DECEMBER 2010 - DECEMBER 2011



A product of Labor Market Information

Rhode Island Department of Labor and Training

1511 Pontiac Avenue, Cranston RI 02920

Phone (401) 462-8740, Fax (401) 462-8766, www.dlt.ri.gov/lmi

Terms Used in the LAUS Report

Employment refers to those persons 16 years of age or older who did any work at all as paid employees during the reference week of the 12th of the month; worked in their own business or on their own farm, or worked without pay at least 15 hours in a family business or farm. Also included are persons who were temporarily absent from their jobs because of illness, bad weather, vacation, labor-management disputes or personal reasons.

Unemployment refers to those persons who had no employment during the reference week; who were available for work; and made specific attempts to find work during the four week period ending with the reference week. Persons laid off from a job and expecting recall need not be looking for work to be counted as unemployed.

The **Labor Force** is the sum of the Employed and the Unemployed.

The **Unemployment Rate** is the number of Unemployed as a percent of the Labor Force.

Over the course of a year the size of the labor force and the levels of employment and unemployment undergo sharp fluctuations due to such seasonal events as changes in weather, reduced or expanding production, harvests, major holidays, and the opening and closing of school. Seasonal fluctuations account for as much as 95% of the month-to-month changes in unemployment. The object of **Seasonal Adjustment** is to make nonseasonal developments, such as declines in economic activity easier to spot. Although most of the data in this publication is unadjusted, the Seasonally Adjusted Unemployment Rate is given for the state of Rhode Island.

The **New England City and Town Area (NECTA)**, Providence-Fall River-Warwick NECTA, includes 37 communities in Rhode Island and 12 in Massachusetts. The general concept of the NECTA is one of a large population center, usually over 50,000, together with adjacent communities which have a high degree of economic and social integration within that locality.

Rhode Island's **Labor Market Area (LMA)**, New Shoreham LMA, consists of an area in which there is a high concentration of economic activity or labor demand. In the LMA, workers can generally change jobs without relocating.

All information found in the Local Area Unemployment Statistics report can also be found on the Labor Market Information Unit's web site at www.dlt.ri.gov/lmi/laus.htm If you would like to discontinue receiving a monthly paper copy of this report, please e-mail lmi@dlt.ri.gov or call (401) 462-8740.

RHODE ISLAND
LOCAL AREA UNEMPLOYMENT STATISTICS
December 2010 - December 2011

1/2012

RHODE ISLAND	Dec-10	Jan-11	Feb-11	Mar-11	Apr-11	May-11	Jun-11	Jul-11	Aug-11	Sep-11	Oct-11	Nov-11	Dec-11
LABOR FORCE	576,473	573,345	568,056	566,473	566,638	563,704	566,644	569,671	564,628	562,441	565,702	567,373	566,049
EMPLOYMENT	513,843	505,282	500,841	501,589	505,700	501,912	508,137	505,764	506,880	506,151	508,071	508,324	505,754
UNEMPLOYMENT	62,630	68,063	67,215	64,884	60,938	61,792	58,507	63,907	57,748	56,290	57,631	59,049	60,295
UNEMPLOYMENT RATE	10.9	11.9	11.8	11.5	10.8	11.0	10.3	11.2	10.2	10.0	10.2	10.4	10.7
SEASONALLY ADJUSTED RATE	11.5	11.3	11.2	11.0	10.9	10.9	10.8	10.8	10.6	10.5	10.4	10.5	10.8
PROVIDENCE-FALL RIVER-WARWICK NECTA													
	Dec-10	Jan-11	Feb-11	Mar-11	Apr-11	May-11	Jun-11	Jul-11	Aug-11	Sep-11	Oct-11	Nov-11	Dec-11
LABOR FORCE	713,425	711,188	707,442	707,821	704,900	701,622	703,631	705,380	701,572	697,542	701,382	703,610	701,670
EMPLOYMENT	636,018	625,863	621,923	623,563	628,074	623,864	630,424	626,654	629,069	627,166	630,439	631,765	628,393
UNEMPLOYMENT	77,407	85,325	85,519	84,258	76,826	77,758	73,207	78,726	72,503	70,376	70,943	71,845	73,277
UNEMPLOYMENT RATE	10.9	12.0	12.1	11.9	10.9	11.1	10.4	11.2	10.3	10.1	10.1	10.2	10.4
PROVIDENCE-FALL RIVER-WARWICK NECTA, RI PORTION													
	Dec-10	Jan-11	Feb-11	Mar-11	Apr-11	May-11	Jun-11	Jul-11	Aug-11	Sep-11	Oct-11	Nov-11	Dec-11
LABOR FORCE	562,234	559,156	554,107	552,698	553,000	550,023	552,242	554,795	549,769	548,292	551,983	553,889	552,437
EMPLOYMENT	501,083	492,801	488,611	489,392	493,273	489,377	494,808	492,004	493,100	493,077	495,424	496,044	493,522
UNEMPLOYMENT	61,151	66,355	65,496	63,306	59,727	60,646	57,434	62,791	56,669	55,215	56,559	57,845	58,915
UNEMPLOYMENT RATE	10.9	11.9	11.8	11.5	10.8	11.0	10.4	11.3	10.3	10.1	10.2	10.4	10.7
PROVIDENCE-FALL RIVER-WARWICK NECTA, MA PORTION													
	Dec-10	Jan-11	Feb-11	Mar-11	Apr-11	May-11	Jun-11	Jul-11	Aug-11	Sep-11	Oct-11	Nov-11	Dec-11
LABOR FORCE	151,191	152,032	153,335	155,123	151,900	151,599	151,389	150,585	151,803	149,250	149,399	149,721	149,233
EMPLOYMENT	134,935	133,062	133,312	134,171	134,801	134,487	135,616	134,650	135,969	134,089	135,015	135,721	134,871
UNEMPLOYMENT	16,256	18,970	20,023	20,952	17,099	17,112	15,773	15,935	15,834	15,161	14,384	14,000	14,362
UNEMPLOYMENT RATE	10.8	12.5	13.1	13.5	11.3	11.3	10.4	10.6	10.4	10.2	9.6	9.4	9.6
BARRINGTON													
	Dec-10	Jan-11	Feb-11	Mar-11	Apr-11	May-11	Jun-11	Jul-11	Aug-11	Sep-11	Oct-11	Nov-11	Dec-11
LABOR FORCE	8,512	8,345	8,266	8,264	8,297	8,319	8,396	8,395	8,375	8,342	8,365	8,370	8,343
EMPLOYMENT	7,821	7,691	7,626	7,638	7,699	7,638	7,723	7,679	7,696	7,696	7,732	7,742	7,703
UNEMPLOYMENT	691	654	640	626	598	681	673	716	679	646	633	628	640
UNEMPLOYMENT RATE	8.1	7.8	7.7	7.6	7.2	8.2	8.0	8.5	8.1	7.7	7.6	7.5	7.7

RHODE ISLAND
LOCAL AREA UNEMPLOYMENT STATISTICS
December 2010 - December 2011

1/2012

BRISTOL	Dec-10	Jan-11	Feb-11	Mar-11	Apr-11	May-11	Jun-11	Jul-11	Aug-11	Sep-11	Oct-11	Nov-11	Dec-11
LABOR FORCE	12,550	12,613	12,499	12,424	12,412	12,330	12,297	12,350	12,299	12,216	12,381	12,429	12,391
EMPLOYMENT	11,359	11,172	11,077	11,094	11,182	11,094	11,217	11,154	11,178	11,178	11,231	11,245	11,188
UNEMPLOYMENT	1,191	1,441	1,422	1,330	1,230	1,236	1,080	1,196	1,121	1,038	1,150	1,184	1,203
UNEMPLOYMENT RATE	9.5	11.4	11.4	10.7	9.9	10.0	8.8	9.7	9.1	8.5	9.3	9.5	9.7
BURRILLVILLE	Dec-10	Jan-11	Feb-11	Mar-11	Apr-11	May-11	Jun-11	Jul-11	Aug-11	Sep-11	Oct-11	Nov-11	Dec-11
LABOR FORCE	10,156	10,133	10,020	9,968	9,964	9,858	9,876	9,983	9,901	9,889	9,921	9,951	9,920
EMPLOYMENT	9,070	8,920	8,844	8,858	8,928	8,858	8,956	8,905	8,925	8,925	8,967	8,979	8,933
UNEMPLOYMENT	1,086	1,213	1,176	1,110	1,036	1,000	920	1,078	976	964	954	972	987
UNEMPLOYMENT RATE	10.7	12.0	11.7	11.1	10.4	10.1	9.3	10.8	9.9	9.7	9.6	9.8	9.9
CENTRAL FALLS	Dec-10	Jan-11	Feb-11	Mar-11	Apr-11	May-11	Jun-11	Jul-11	Aug-11	Sep-11	Oct-11	Nov-11	Dec-11
LABOR FORCE	8,344	8,327	8,180	8,259	8,280	8,313	8,380	8,407	8,252	8,273	8,325	8,327	8,251
EMPLOYMENT	7,223	7,104	7,044	7,055	7,111	7,055	7,133	7,093	7,108	7,108	7,142	7,151	7,114
UNEMPLOYMENT	1,121	1,223	1,136	1,204	1,169	1,258	1,247	1,314	1,144	1,165	1,183	1,176	1,137
UNEMPLOYMENT RATE	13.4	14.7	13.9	14.6	14.1	15.1	14.9	15.6	13.9	14.1	14.2	14.1	13.8
CHARLESTOWN	Dec-10	Jan-11	Feb-11	Mar-11	Apr-11	May-11	Jun-11	Jul-11	Aug-11	Sep-11	Oct-11	Nov-11	Dec-11
LABOR FORCE	4,934	4,954	4,936	4,904	4,831	4,729	4,718	4,807	4,760	4,749	4,762	4,764	4,808
EMPLOYMENT	4,327	4,255	4,219	4,226	4,259	4,225	4,272	4,248	4,258	4,257	4,278	4,283	4,261
UNEMPLOYMENT	607	699	717	678	572	504	446	559	502	492	484	481	547
UNEMPLOYMENT RATE	12.3	14.1	14.5	13.8	11.8	10.7	9.5	11.6	10.5	10.4	10.2	10.1	11.4
COVENTRY	Dec-10	Jan-11	Feb-11	Mar-11	Apr-11	May-11	Jun-11	Jul-11	Aug-11	Sep-11	Oct-11	Nov-11	Dec-11
LABOR FORCE	21,012	20,911	20,829	20,744	20,618	20,494	20,676	20,842	20,699	20,575	20,687	20,725	20,639
EMPLOYMENT	18,912	18,599	18,441	18,471	18,617	18,470	18,675	18,569	18,611	18,610	18,698	18,722	18,627
UNEMPLOYMENT	2,100	2,312	2,388	2,273	2,001	2,024	2,001	2,273	2,088	1,965	1,989	2,003	2,012
UNEMPLOYMENT RATE	10.0	11.1	11.5	11.0	9.7	9.9	9.7	10.9	10.1	9.6	9.6	9.7	9.7
CRANSTON	Dec-10	Jan-11	Feb-11	Mar-11	Apr-11	May-11	Jun-11	Jul-11	Aug-11	Sep-11	Oct-11	Nov-11	Dec-11
LABOR FORCE	42,716	42,390	41,986	41,893	42,183	42,000	42,236	42,332	41,952	41,840	42,145	42,303	42,274
EMPLOYMENT	38,262	37,630	37,310	37,369	37,666	37,368	37,783	37,569	37,653	37,651	37,830	37,877	37,685
UNEMPLOYMENT	4,454	4,760	4,676	4,524	4,517	4,632	4,453	4,763	4,299	4,189	4,315	4,426	4,589
UNEMPLOYMENT RATE	10.4	11.2	11.1	10.8	10.7	11.0	10.5	11.3	10.2	10.0	10.2	10.5	10.9

RHODE ISLAND
LOCAL AREA UNEMPLOYMENT STATISTICS
December 2010 - December 2011

1/2012

CUMBERLAND	Dec-10	Jan-11	Feb-11	Mar-11	Apr-11	May-11	Jun-11	Jul-11	Aug-11	Sep-11	Oct-11	Nov-11	Dec-11
LABOR FORCE	20,203	19,999	19,837	19,843	19,854	19,646	19,784	19,915	19,760	19,708	19,757	19,735	19,653
EMPLOYMENT	18,205	17,904	17,752	17,780	17,921	17,780	17,977	17,875	17,915	17,914	17,999	18,022	17,930
UNEMPLOYMENT	1,998	2,095	2,085	2,063	1,933	1,866	1,807	2,040	1,845	1,794	1,758	1,713	1,723
UNEMPLOYMENT RATE	9.9	10.5	10.5	10.4	9.7	9.5	9.1	10.2	9.3	9.1	8.9	8.7	8.8
EAST GREENWICH	Dec-10	Jan-11	Feb-11	Mar-11	Apr-11	May-11	Jun-11	Jul-11	Aug-11	Sep-11	Oct-11	Nov-11	Dec-11
LABOR FORCE	7,137	7,092	7,014	7,019	7,052	7,037	7,080	7,009	6,954	6,949	6,998	7,018	7,014
EMPLOYMENT	6,408	6,302	6,249	6,259	6,308	6,259	6,328	6,292	6,306	6,306	6,336	6,344	6,312
UNEMPLOYMENT	729	790	765	760	744	778	752	717	648	643	662	674	702
UNEMPLOYMENT RATE	10.2	11.1	10.9	10.8	10.6	11.1	10.6	10.2	9.3	9.3	9.5	9.6	10.0
EAST PROVIDENCE	Dec-10	Jan-11	Feb-11	Mar-11	Apr-11	May-11	Jun-11	Jul-11	Aug-11	Sep-11	Oct-11	Nov-11	Dec-11
LABOR FORCE	26,694	26,414	26,153	26,050	25,974	25,751	25,748	25,914	25,752	25,893	26,028	26,122	26,027
EMPLOYMENT	23,498	23,110	22,914	22,950	23,132	22,949	23,204	23,073	23,124	23,123	23,233	23,262	23,144
UNEMPLOYMENT	3,196	3,304	3,239	3,100	2,842	2,802	2,544	2,841	2,628	2,770	2,795	2,860	2,883
UNEMPLOYMENT RATE	12.0	12.5	12.4	11.9	10.9	10.9	9.9	11.0	10.2	10.7	10.7	10.9	11.1
EXETER	Dec-10	Jan-11	Feb-11	Mar-11	Apr-11	May-11	Jun-11	Jul-11	Aug-11	Sep-11	Oct-11	Nov-11	Dec-11
LABOR FORCE	3,929	3,985	3,955	3,905	3,853	3,786	3,763	3,790	3,750	3,719	3,825	3,811	3,789
EMPLOYMENT	3,522	3,463	3,434	3,439	3,467	3,439	3,477	3,458	3,465	3,465	3,482	3,486	3,468
UNEMPLOYMENT	407	522	521	466	386	347	286	332	285	254	343	325	321
UNEMPLOYMENT RATE	10.4	13.1	13.2	11.9	10.0	9.2	7.6	8.8	7.6	6.8	9.0	8.5	8.5
FOSTER	Dec-10	Jan-11	Feb-11	Mar-11	Apr-11	May-11	Jun-11	Jul-11	Aug-11	Sep-11	Oct-11	Nov-11	Dec-11
LABOR FORCE	2,829	2,851	2,818	2,802	2,771	2,761	2,740	2,779	2,738	2,722	2,698	2,733	2,753
EMPLOYMENT	2,483	2,442	2,421	2,425	2,445	2,425	2,452	2,438	2,444	2,444	2,455	2,458	2,446
UNEMPLOYMENT	346	409	397	377	326	336	288	341	294	278	243	275	307
UNEMPLOYMENT RATE	12.2	14.3	14.1	13.5	11.8	12.2	10.5	12.3	10.7	10.2	9.0	10.1	11.2
GLOCESTER	Dec-10	Jan-11	Feb-11	Mar-11	Apr-11	May-11	Jun-11	Jul-11	Aug-11	Sep-11	Oct-11	Nov-11	Dec-11
LABOR FORCE	6,592	6,622	6,559	6,535	6,497	6,446	6,406	6,465	6,402	6,394	6,444	6,489	6,467
EMPLOYMENT	6,033	5,934	5,883	5,893	5,939	5,892	5,958	5,924	5,937	5,937	5,965	5,973	5,942
UNEMPLOYMENT	559	688	676	642	558	554	448	541	465	457	479	516	525
UNEMPLOYMENT RATE	8.5	10.4	10.3	9.8	8.6	8.6	7.0	8.4	7.3	7.1	7.4	8.0	8.1

RHODE ISLAND
LOCAL AREA UNEMPLOYMENT STATISTICS
December 2010 - December 2011

1/2012

HOPKINTON	Dec-10	Jan-11	Feb-11	Mar-11	Apr-11	May-11	Jun-11	Jul-11	Aug-11	Sep-11	Oct-11	Nov-11	Dec-11
LABOR FORCE	4,953	4,999	4,964	4,882	4,852	4,790	4,805	4,886	4,824	4,794	4,810	4,862	4,808
EMPLOYMENT	4,413	4,340	4,303	4,310	4,344	4,310	4,358	4,333	4,343	4,343	4,363	4,369	4,347
UNEMPLOYMENT	540	659	661	572	508	480	447	553	481	451	447	493	461
UNEMPLOYMENT RATE	10.9	13.2	13.3	11.7	10.5	10.0	9.3	11.3	10.0	9.4	9.3	10.1	9.6
JAMESTOWN	Dec-10	Jan-11	Feb-11	Mar-11	Apr-11	May-11	Jun-11	Jul-11	Aug-11	Sep-11	Oct-11	Nov-11	Dec-11
LABOR FORCE	3,186	3,216	3,159	3,145	3,136	3,087	3,092	3,077	3,091	3,073	3,105	3,120	3,129
EMPLOYMENT	2,914	2,866	2,842	2,846	2,869	2,846	2,878	2,861	2,868	2,868	2,881	2,885	2,870
UNEMPLOYMENT	272	350	317	299	267	241	214	216	223	205	224	235	259
UNEMPLOYMENT RATE	8.5	10.9	10.0	9.5	8.5	7.8	6.9	7.0	7.2	6.7	7.2	7.5	8.3
JOHNSTON	Dec-10	Jan-11	Feb-11	Mar-11	Apr-11	May-11	Jun-11	Jul-11	Aug-11	Sep-11	Oct-11	Nov-11	Dec-11
LABOR FORCE	16,140	16,097	15,997	15,919	15,884	15,738	15,745	15,767	15,624	15,553	15,671	15,707	15,690
EMPLOYMENT	14,188	13,954	13,835	13,857	13,967	13,857	14,010	13,931	13,962	13,961	14,028	14,045	13,974
UNEMPLOYMENT	1,952	2,143	2,162	2,062	1,917	1,881	1,735	1,836	1,662	1,592	1,643	1,662	1,716
UNEMPLOYMENT RATE	12.1	13.3	13.5	13.0	12.1	12.0	11.0	11.6	10.6	10.2	10.5	10.6	10.9
LINCOLN	Dec-10	Jan-11	Feb-11	Mar-11	Apr-11	May-11	Jun-11	Jul-11	Aug-11	Sep-11	Oct-11	Nov-11	Dec-11
LABOR FORCE	12,574	12,489	12,374	12,320	12,291	12,198	12,292	12,404	12,374	12,353	12,393	12,435	12,389
EMPLOYMENT	11,404	11,216	11,120	11,138	11,227	11,138	11,261	11,198	11,223	11,222	11,276	11,290	11,232
UNEMPLOYMENT	1,170	1,273	1,254	1,182	1,064	1,060	1,031	1,206	1,151	1,131	1,117	1,145	1,157
UNEMPLOYMENT RATE	9.3	10.2	10.1	9.6	8.7	8.7	8.4	9.7	9.3	9.2	9.0	9.2	9.3
LITTLE COMPTON	Dec-10	Jan-11	Feb-11	Mar-11	Apr-11	May-11	Jun-11	Jul-11	Aug-11	Sep-11	Oct-11	Nov-11	Dec-11
LABOR FORCE	2,038	2,042	2,041	2,010	1,992	1,948	1,951	1,954	1,955	1,938	1,971	1,985	2,003
EMPLOYMENT	1,819	1,789	1,774	1,776	1,790	1,776	1,796	1,786	1,790	1,790	1,798	1,801	1,791
UNEMPLOYMENT	219	253	267	234	202	172	155	168	165	148	173	184	212
UNEMPLOYMENT RATE	10.7	12.4	13.1	11.6	10.1	8.8	7.9	8.6	8.4	7.6	8.8	9.3	10.6
MIDDLETOWN	Dec-10	Jan-11	Feb-11	Mar-11	Apr-11	May-11	Jun-11	Jul-11	Aug-11	Sep-11	Oct-11	Nov-11	Dec-11
LABOR FORCE	8,366	8,395	8,320	8,230	8,105	7,980	8,024	7,987	7,990	7,955	8,049	8,148	8,210
EMPLOYMENT	7,428	7,305	7,243	7,255	7,312	7,255	7,335	7,294	7,310	7,310	7,344	7,354	7,316
UNEMPLOYMENT	938	1,090	1,077	975	793	725	689	693	680	645	705	794	894
UNEMPLOYMENT RATE	11.2	13.0	12.9	11.8	9.8	9.1	8.6	8.7	8.5	8.1	8.8	9.7	10.9

RHODE ISLAND
LOCAL AREA UNEMPLOYMENT STATISTICS
December 2010 - December 2011

1/2012

NARRAGANSETT	Dec-10	Jan-11	Feb-11	Mar-11	Apr-11	May-11	Jun-11	Jul-11	Aug-11	Sep-11	Oct-11	Nov-11	Dec-11
LABOR FORCE	10,077	9,964	9,866	9,782	9,772	9,710	9,808	9,773	9,734	9,737	9,805	9,874	9,855
EMPLOYMENT	9,230	9,077	9,000	9,014	9,086	9,014	9,114	9,063	9,083	9,082	9,126	9,137	9,091
UNEMPLOYMENT	847	887	866	768	686	696	694	710	651	655	679	737	764
UNEMPLOYMENT RATE	8.4	8.9	8.8	7.9	7.0	7.2	7.1	7.3	6.7	6.7	6.9	7.5	7.8
NEW SHOREHAM	Dec-10	Jan-11	Feb-11	Mar-11	Apr-11	May-11	Jun-11	Jul-11	Aug-11	Sep-11	Oct-11	Nov-11	Dec-11
LABOR FORCE	770	717	704	700	745	954	1,446	1,846	1,824	1,348	976	748	754
EMPLOYMENT	590	504	492	512	581	815	1,332	1,737	1,728	1,252	864	599	565
UNEMPLOYMENT	180	213	212	188	164	139	114	109	96	96	112	149	189
UNEMPLOYMENT RATE	23.4	29.7	30.1	26.9	22.0	14.6	7.9	5.9	5.3	7.1	11.5	19.9	25.1
NEWPORT	Dec-10	Jan-11	Feb-11	Mar-11	Apr-11	May-11	Jun-11	Jul-11	Aug-11	Sep-11	Oct-11	Nov-11	Dec-11
LABOR FORCE	12,920	13,166	12,922	12,771	12,536	12,417	12,347	12,374	12,254	12,176	12,335	12,686	12,751
EMPLOYMENT	11,424	11,235	11,139	11,157	11,246	11,157	11,281	11,217	11,242	11,241	11,295	11,309	11,251
UNEMPLOYMENT	1,496	1,931	1,783	1,614	1,290	1,260	1,066	1,157	1,012	935	1,040	1,377	1,500
UNEMPLOYMENT RATE	11.6	14.7	13.8	12.6	10.3	10.1	8.6	9.4	8.3	7.7	8.4	10.9	11.8
NORTH KINGSTOWN	Dec-10	Jan-11	Feb-11	Mar-11	Apr-11	May-11	Jun-11	Jul-11	Aug-11	Sep-11	Oct-11	Nov-11	Dec-11
LABOR FORCE	15,784	15,682	15,568	15,566	15,568	15,442	15,459	15,411	15,327	15,330	15,445	15,528	15,570
EMPLOYMENT	14,339	14,102	13,982	14,004	14,115	14,004	14,159	14,079	14,110	14,110	14,177	14,195	14,123
UNEMPLOYMENT	1,445	1,580	1,586	1,562	1,453	1,438	1,300	1,332	1,217	1,220	1,268	1,333	1,447
UNEMPLOYMENT RATE	9.2	10.1	10.2	10.0	9.3	9.3	8.4	8.6	7.9	8.0	8.2	8.6	9.3
NORTH PROVIDENCE	Dec-10	Jan-11	Feb-11	Mar-11	Apr-11	May-11	Jun-11	Jul-11	Aug-11	Sep-11	Oct-11	Nov-11	Dec-11
LABOR FORCE	19,053	18,794	18,672	18,602	18,668	18,621	18,663	18,772	18,636	18,589	18,720	18,690	18,628
EMPLOYMENT	16,998	16,717	16,575	16,602	16,733	16,601	16,786	16,690	16,728	16,727	16,806	16,827	16,742
UNEMPLOYMENT	2,055	2,077	2,097	2,000	1,935	2,020	1,877	2,082	1,908	1,862	1,914	1,863	1,886
UNEMPLOYMENT RATE	10.8	11.1	11.2	10.8	10.4	10.8	10.1	11.1	10.2	10.0	10.2	10.0	10.1
NORTH SMITHFIELD	Dec-10	Jan-11	Feb-11	Mar-11	Apr-11	May-11	Jun-11	Jul-11	Aug-11	Sep-11	Oct-11	Nov-11	Dec-11
LABOR FORCE	6,654	6,631	6,581	6,580	6,542	6,501	6,542	6,565	6,508	6,454	6,472	6,527	6,474
EMPLOYMENT	6,036	5,937	5,886	5,896	5,942	5,895	5,961	5,927	5,940	5,940	5,968	5,976	5,945
UNEMPLOYMENT	618	694	695	684	600	606	581	638	568	514	504	551	529
UNEMPLOYMENT RATE	9.3	10.5	10.6	10.4	9.2	9.3	8.9	9.7	8.7	8.0	7.8	8.4	8.2

RHODE ISLAND
LOCAL AREA UNEMPLOYMENT STATISTICS
December 2010 - December 2011

1/2012

PAWTUCKET	Dec-10	Jan-11	Feb-11	Mar-11	Apr-11	May-11	Jun-11	Jul-11	Aug-11	Sep-11	Oct-11	Nov-11	Dec-11
LABOR FORCE	37,856	37,439	37,123	37,079	37,409	37,378	37,546	37,787	37,345	37,343	37,613	37,724	37,527
EMPLOYMENT	33,356	32,805	32,526	32,578	32,836	32,577	32,938	32,752	32,824	32,823	32,979	33,020	32,853
UNEMPLOYMENT	4,500	4,634	4,597	4,501	4,573	4,801	4,608	5,035	4,521	4,520	4,634	4,704	4,674
UNEMPLOYMENT RATE	11.9	12.4	12.4	12.1	12.2	12.8	12.3	13.3	12.1	12.1	12.3	12.5	12.5
PORTSMOUTH	Dec-10	Jan-11	Feb-11	Mar-11	Apr-11	May-11	Jun-11	Jul-11	Aug-11	Sep-11	Oct-11	Nov-11	Dec-11
LABOR FORCE	9,468	9,558	9,467	9,416	9,331	9,286	9,312	9,268	9,183	9,148	9,236	9,357	9,382
EMPLOYMENT	8,582	8,440	8,368	8,382	8,448	8,381	8,474	8,426	8,445	8,445	8,485	8,495	8,452
UNEMPLOYMENT	886	1,118	1,099	1,034	883	905	838	842	738	703	751	862	930
UNEMPLOYMENT RATE	9.4	11.7	11.6	11.0	9.5	9.7	9.0	9.1	8.0	7.7	8.1	9.2	9.9
PROVIDENCE	Dec-10	Jan-11	Feb-11	Mar-11	Apr-11	May-11	Jun-11	Jul-11	Aug-11	Sep-11	Oct-11	Nov-11	Dec-11
LABOR FORCE	80,643	79,804	78,931	79,059	79,778	79,890	80,631	81,106	79,788	79,217	79,735	79,637	79,067
EMPLOYMENT	70,192	69,031	68,444	68,554	69,097	68,552	69,313	68,920	69,073	69,070	69,399	69,486	69,132
UNEMPLOYMENT	10,451	10,773	10,487	10,505	10,681	11,338	11,318	12,186	10,715	10,147	10,336	10,151	9,935
UNEMPLOYMENT RATE	13.0	13.5	13.3	13.3	13.4	14.2	14.0	15.0	13.4	12.8	13.0	12.7	12.6
RICHMOND	Dec-10	Jan-11	Feb-11	Mar-11	Apr-11	May-11	Jun-11	Jul-11	Aug-11	Sep-11	Oct-11	Nov-11	Dec-11
LABOR FORCE	4,417	4,386	4,336	4,330	4,322	4,297	4,310	4,334	4,319	4,302	4,326	4,312	4,307
EMPLOYMENT	4,075	4,008	3,973	3,980	4,011	3,980	4,024	4,001	4,010	4,010	4,029	4,034	4,013
UNEMPLOYMENT	342	378	363	350	311	317	286	333	309	292	297	278	294
UNEMPLOYMENT RATE	7.7	8.6	8.4	8.1	7.2	7.4	6.6	7.7	7.2	6.8	6.9	6.4	6.8
SCITUATE	Dec-10	Jan-11	Feb-11	Mar-11	Apr-11	May-11	Jun-11	Jul-11	Aug-11	Sep-11	Oct-11	Nov-11	Dec-11
LABOR FORCE	6,552	6,581	6,530	6,500	6,431	6,346	6,414	6,492	6,366	6,370	6,382	6,444	6,480
EMPLOYMENT	5,916	5,818	5,769	5,778	5,824	5,778	5,842	5,809	5,822	5,822	5,849	5,857	5,827
UNEMPLOYMENT	636	763	761	722	607	568	572	683	544	548	533	587	653
UNEMPLOYMENT RATE	9.7	11.6	11.7	11.1	9.4	9.0	8.9	10.5	8.5	8.6	8.4	9.1	10.1
SMITHFIELD	Dec-10	Jan-11	Feb-11	Mar-11	Apr-11	May-11	Jun-11	Jul-11	Aug-11	Sep-11	Oct-11	Nov-11	Dec-11
LABOR FORCE	12,018	11,993	11,871	11,900	11,947	11,784	11,870	11,948	11,845	11,727	11,794	11,838	11,789
EMPLOYMENT	10,885	10,705	10,614	10,631	10,715	10,630	10,748	10,687	10,711	10,711	10,762	10,775	10,720
UNEMPLOYMENT	1,133	1,288	1,257	1,269	1,232	1,154	1,122	1,261	1,134	1,016	1,032	1,063	1,069
UNEMPLOYMENT RATE	9.4	10.7	10.6	10.7	10.3	9.8	9.5	10.6	9.6	8.7	8.8	9.0	9.1

RHODE ISLAND
LOCAL AREA UNEMPLOYMENT STATISTICS
December 2010 - December 2011

1/2012

SOUTH KINGSTOWN	Dec-10	Jan-11	Feb-11	Mar-11	Apr-11	May-11	Jun-11	Jul-11	Aug-11	Sep-11	Oct-11	Nov-11	Dec-11
LABOR FORCE	16,136	16,179	15,982	15,941	15,861	15,702	15,776	15,901	15,733	15,605	15,763	15,929	15,875
EMPLOYMENT	14,585	14,344	14,222	14,245	14,358	14,245	14,403	14,321	14,353	14,352	14,421	14,439	14,365
UNEMPLOYMENT	1,551	1,835	1,760	1,696	1,503	1,457	1,373	1,580	1,380	1,253	1,342	1,490	1,510
UNEMPLOYMENT RATE	9.6	11.3	11.0	10.6	9.5	9.3	8.7	9.9	8.8	8.0	8.5	9.4	9.5
TIVERTON	Dec-10	Jan-11	Feb-11	Mar-11	Apr-11	May-11	Jun-11	Jul-11	Aug-11	Sep-11	Oct-11	Nov-11	Dec-11
LABOR FORCE	8,821	8,849	8,765	8,720	8,605	8,475	8,490	8,560	8,511	8,468	8,530	8,546	8,634
EMPLOYMENT	7,772	7,643	7,578	7,590	7,651	7,590	7,674	7,631	7,648	7,647	7,684	7,693	7,654
UNEMPLOYMENT	1,049	1,206	1,187	1,130	954	885	816	929	863	821	846	853	980
UNEMPLOYMENT RATE	11.9	13.6	13.5	13.0	11.1	10.4	9.6	10.9	10.1	9.7	9.9	10.0	11.4
WARREN	Dec-10	Jan-11	Feb-11	Mar-11	Apr-11	May-11	Jun-11	Jul-11	Aug-11	Sep-11	Oct-11	Nov-11	Dec-11
LABOR FORCE	6,242	6,258	6,241	6,220	6,219	6,193	6,216	6,230	6,163	6,138	6,152	6,192	6,180
EMPLOYMENT	5,635	5,542	5,495	5,503	5,547	5,503	5,564	5,533	5,545	5,545	5,571	5,578	5,550
UNEMPLOYMENT	607	716	746	717	672	690	652	697	618	593	581	614	630
UNEMPLOYMENT RATE	9.7	11.4	12.0	11.5	10.8	11.1	10.5	11.2	10.0	9.7	9.4	9.9	10.2
WARWICK	Dec-10	Jan-11	Feb-11	Mar-11	Apr-11	May-11	Jun-11	Jul-11	Aug-11	Sep-11	Oct-11	Nov-11	Dec-11
LABOR FORCE	49,158	48,683	48,320	48,183	48,259	48,033	48,248	48,461	48,171	48,197	48,446	48,520	48,299
EMPLOYMENT	44,345	43,612	43,242	43,311	43,654	43,309	43,790	43,542	43,639	43,637	43,845	43,899	43,676
UNEMPLOYMENT	4,813	5,071	5,078	4,872	4,605	4,724	4,458	4,919	4,532	4,560	4,601	4,621	4,623
UNEMPLOYMENT RATE	9.8	10.4	10.5	10.1	9.5	9.8	9.2	10.2	9.4	9.5	9.5	9.5	9.6
WEST GREENWICH	Dec-10	Jan-11	Feb-11	Mar-11	Apr-11	May-11	Jun-11	Jul-11	Aug-11	Sep-11	Oct-11	Nov-11	Dec-11
LABOR FORCE	3,918	3,956	3,924	3,907	3,867	3,830	3,835	3,894	3,881	3,865	3,920	3,916	3,897
EMPLOYMENT	3,579	3,519	3,490	3,495	3,523	3,495	3,534	3,514	3,522	3,521	3,538	3,543	3,525
UNEMPLOYMENT	339	437	434	412	344	335	301	380	359	344	382	373	372
UNEMPLOYMENT RATE	8.7	11.0	11.1	10.5	8.9	8.7	7.8	9.8	9.3	8.9	9.7	9.5	9.5
WEST WARWICK	Dec-10	Jan-11	Feb-11	Mar-11	Apr-11	May-11	Jun-11	Jul-11	Aug-11	Sep-11	Oct-11	Nov-11	Dec-11
LABOR FORCE	17,047	17,027	16,956	16,871	16,876	16,869	16,792	16,808	16,628	16,677	16,780	16,823	16,859
EMPLOYMENT	15,096	14,846	14,720	14,744	14,861	14,743	14,907	14,822	14,855	14,855	14,925	14,944	14,868
UNEMPLOYMENT	1,951	2,181	2,236	2,127	2,015	2,126	1,885	1,986	1,773	1,822	1,855	1,879	1,991
UNEMPLOYMENT RATE	11.4	12.8	13.2	12.6	11.9	12.6	11.2	11.8	10.7	10.9	11.1	11.2	11.8

RHODE ISLAND
LOCAL AREA UNEMPLOYMENT STATISTICS
December 2010 - December 2011

1/2012

WESTERLY	Dec-10	Jan-11	Feb-11	Mar-11	Apr-11	May-11	Jun-11	Jul-11	Aug-11	Sep-11	Oct-11	Nov-11	Dec-11
LABOR FORCE	13,469	13,473	13,246	13,075	12,892	12,728	12,956	13,029	13,035	12,802	12,744	12,736	12,858
EMPLOYMENT	12,170	11,977	11,738	11,685	11,845	11,721	11,997	12,023	12,052	11,822	11,784	11,681	11,667
UNEMPLOYMENT	1,299	1,496	1,508	1,390	1,047	1,007	959	1,006	983	980	960	1,055	1,191
UNEMPLOYMENT RATE	9.6	11.1	11.4	10.6	8.1	7.9	7.4	7.7	7.5	7.7	7.5	8.3	9.3
WOONSOCKET	Dec-10	Jan-11	Feb-11	Mar-11	Apr-11	May-11	Jun-11	Jul-11	Aug-11	Sep-11	Oct-11	Nov-11	Dec-11
LABOR FORCE	22,609	22,331	22,145	22,152	22,161	22,033	21,971	22,048	21,923	22,016	22,192	22,313	22,304
EMPLOYMENT	19,749	19,422	19,257	19,288	19,441	19,287	19,501	19,391	19,434	19,433	19,526	19,550	19,451
UNEMPLOYMENT	2,860	2,909	2,888	2,864	2,720	2,746	2,470	2,657	2,489	2,583	2,666	2,763	2,853
UNEMPLOYMENT RATE	12.6	13.0	13.0	12.9	12.3	12.5	11.2	12.1	11.4	11.7	12.0	12.4	12.8
BRISTOL COUNTY	Dec-10	Jan-11	Feb-11	Mar-11	Apr-11	May-11	Jun-11	Jul-11	Aug-11	Sep-11	Oct-11	Nov-11	Dec-11
LABOR FORCE	27,304	27,216	27,006	26,908	26,928	26,842	26,909	26,975	26,837	26,696	26,898	26,991	26,914
EMPLOYMENT	24,815	24,405	24,198	24,235	24,428	24,235	24,504	24,366	24,419	24,419	24,534	24,565	24,441
UNEMPLOYMENT	2,489	2,811	2,808	2,673	2,500	2,607	2,405	2,609	2,418	2,277	2,364	2,426	2,473
UNEMPLOYMENT RATE	9.1	10.3	10.4	9.9	9.3	9.7	8.9	9.7	9.0	8.5	8.8	9.0	9.2
KENT COUNTY	Dec-10	Jan-11	Feb-11	Mar-11	Apr-11	May-11	Jun-11	Jul-11	Aug-11	Sep-11	Oct-11	Nov-11	Dec-11
LABOR FORCE	98,272	97,669	97,043	96,724	96,672	96,263	96,631	97,014	96,333	96,263	96,831	97,002	96,708
EMPLOYMENT	88,340	86,878	86,142	86,280	86,963	86,276	87,234	86,739	86,933	86,929	87,342	87,452	87,008
UNEMPLOYMENT	9,932	10,791	10,901	10,444	9,709	9,987	9,397	10,275	9,400	9,334	9,489	9,550	9,700
UNEMPLOYMENT RATE	10.1	11.0	11.2	10.8	10.0	10.4	9.7	10.6	9.8	9.7	9.8	9.8	10.0
NEWPORT COUNTY	Dec-10	Jan-11	Feb-11	Mar-11	Apr-11	May-11	Jun-11	Jul-11	Aug-11	Sep-11	Oct-11	Nov-11	Dec-11
LABOR FORCE	44,799	45,226	44,674	44,292	43,705	43,193	43,216	43,220	42,984	42,758	43,226	43,842	44,109
EMPLOYMENT	39,939	39,278	38,944	39,006	39,316	39,005	39,438	39,215	39,303	39,301	39,487	39,537	39,334
UNEMPLOYMENT	4,860	5,948	5,730	5,286	4,389	4,188	3,778	4,005	3,681	3,457	3,739	4,305	4,775
UNEMPLOYMENT RATE	10.8	13.2	12.8	11.9	10.0	9.7	8.7	9.3	8.6	8.1	8.6	9.8	10.8

RHODE ISLAND
LOCAL AREA UNEMPLOYMENT STATISTICS
December 2010 - December 2011

1/2012

PROVIDENCE COUNTY	Dec-10	Jan-11	Feb-11	Mar-11	Apr-11	May-11	Jun-11	Jul-11	Aug-11	Sep-11	Oct-11	Nov-11	Dec-11
LABOR FORCE	331,633	328,895	325,777	325,461	326,634	325,264	326,844	328,684	325,166	324,341	326,290	326,975	325,693
EMPLOYMENT	293,498	288,649	286,194	286,652	288,924	286,642	289,823	288,182	288,823	288,811	290,184	290,548	289,070
UNEMPLOYMENT	38,135	40,246	39,583	38,809	37,710	38,622	37,021	40,502	36,343	35,530	36,106	36,427	36,623
UNEMPLOYMENT RATE	11.5	12.2	12.2	11.9	11.5	11.9	11.3	12.3	11.2	11.0	11.1	11.1	11.2
WASHINGTON COUNTY	Dec-10	Jan-11	Feb-11	Mar-11	Apr-11	May-11	Jun-11	Jul-11	Aug-11	Sep-11	Oct-11	Nov-11	Dec-11
LABOR FORCE	74,469	74,339	73,557	73,085	72,696	72,138	73,041	73,777	73,306	72,386	72,456	72,564	72,624
EMPLOYMENT	67,251	66,070	65,363	65,415	66,066	65,753	67,136	67,263	67,402	66,693	66,524	66,223	65,900
UNEMPLOYMENT	7,218	8,269	8,194	7,670	6,630	6,385	5,905	6,514	5,904	5,693	5,932	6,341	6,724
UNEMPLOYMENT RATE	9.7	11.1	11.1	10.5	9.1	8.9	8.1	8.8	8.1	7.9	8.2	8.7	9.3
PROVIDENCE-CRANSTON WIA	Dec-10	Jan-11	Feb-11	Mar-11	Apr-11	May-11	Jun-11	Jul-11	Aug-11	Sep-11	Oct-11	Nov-11	Dec-11
LABOR FORCE	123,359	122,194	120,917	120,952	121,961	121,890	122,867	123,438	121,740	121,057	121,880	121,940	121,341
EMPLOYMENT	108,454	106,661	105,754	105,923	106,763	105,920	107,096	106,489	106,726	106,721	107,229	107,363	106,817
UNEMPLOYMENT	14,905	15,533	15,163	15,029	15,198	15,970	15,771	16,949	15,014	14,336	14,651	14,577	14,524
UNEMPLOYMENT RATE	12.1	12.7	12.5	12.4	12.5	13.1	12.8	13.7	12.3	11.8	12.0	12.0	12.0
GREATER RHODE ISLAND WIA	Dec-10	Jan-11	Feb-11	Mar-11	Apr-11	May-11	Jun-11	Jul-11	Aug-11	Sep-11	Oct-11	Nov-11	Dec-11
LABOR FORCE	453,118	451,151	447,140	445,518	444,674	441,810	443,774	446,232	442,886	441,387	443,821	445,434	444,707
EMPLOYMENT	405,389	398,619	395,087	395,665	398,934	395,991	401,039	399,276	400,154	399,432	400,842	400,962	398,936
UNEMPLOYMENT	47,729	52,532	52,053	49,853	45,740	45,819	42,735	46,956	42,732	41,955	42,979	44,472	45,771
UNEMPLOYMENT RATE	10.5	11.6	11.6	11.2	10.3	10.4	9.6	10.5	9.6	9.5	9.7	10.0	10.3

* Subject to approval by the Bureau of Labor Statistics